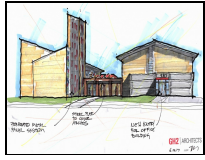


Properties for Lease

1 111 N Ash Ave, Broken Arrow, OK 74012



Rental Rate Yr \$10.00 - \$15.00 /SF/Yr
 Spaces 2
 Property Sub-type Storefront Retail/Office
 Broker Information Stan Synar
 (918) 808-4443
 Status Active
 LoopNet ID 6942710

Property Notes

Adjacent building recently leased to popular restaurant, Bramble Breakfast and Bar.

Listing's Link: <http://www.loopnet.com/lid/6942710>

Spaces

#	Total Space Avail.	Rental Rate	Min Divisible	Max Contig.	Lease Type	Date Avail.	Description	Service Type
1st Floor	4,000 SF	\$10.00 - \$15.00 /SF/Yr	4,000 SF	8,000 SF	New	Immediate	In The Rose District. Two story masonry construction with exposed steel truss and beams. Ideal space for business office use. Lots of on site parking and TI available.	Triple Net
2nd Floor	4,000 SF	\$10.00 - \$15.00 /SF/Yr	4,000 SF	8,000 SF	New	Immediate	In The Rose District. Two story masonry construction with exposed steel truss and beams. Ideal space for business office use. Lots of on site parking and TI available.	Triple Net

Property Description

In historic downtown Broken Arrow. Located on Ash St., between College St. and Broadway St. Property is located in The Rose District, where the arts, entertainment, retail shops and restaurants are bustling with family friendly opportunities daily. Construction to begin soon on new restaurant group in the old sanctuary space. Looking for complimentary tenant for two story building to south of sanctuary. Great opportunity for single office user or mixed use retail/brewery/office.